

TUESDAY PETITE BALLET

“DANCE OF THE FLUTE” - MISS LISA



COSTUME PIECES: Glitter Leotard

ACCESSORIES: Beaded Hair Applique

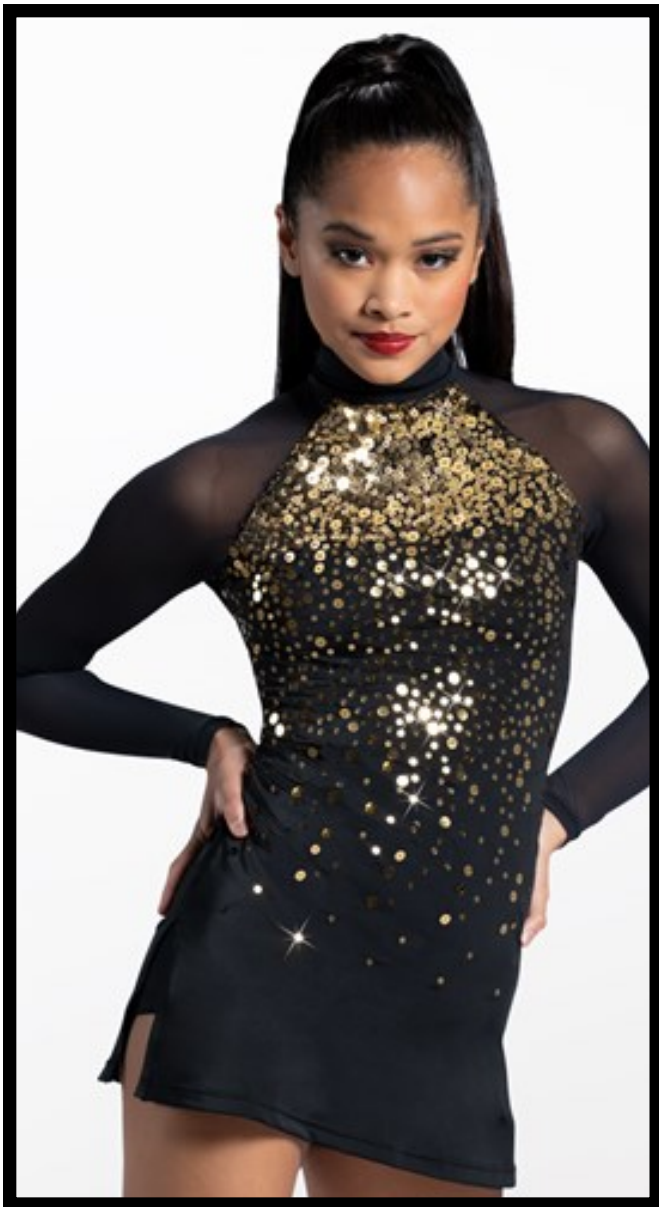
SHOES: Pink Ballet Slippers

TIGHTS: Pink Footed

HAIR: Bun at crown angled from temples. Headpiece on right side of head large end up between ear and bun. Cross cross bobby-pins to secure (wavy-side down, same color as dancer's hair)

COSTUMES NOTES: Steam tutu, hang upside down

TUESDAY PETITE/JUNIOR JAZZ “LEVITATING” - MISS ISABELLA



COSTUME PIECES: Black/Gold Sequin
Dress

ACCESSORIES: None

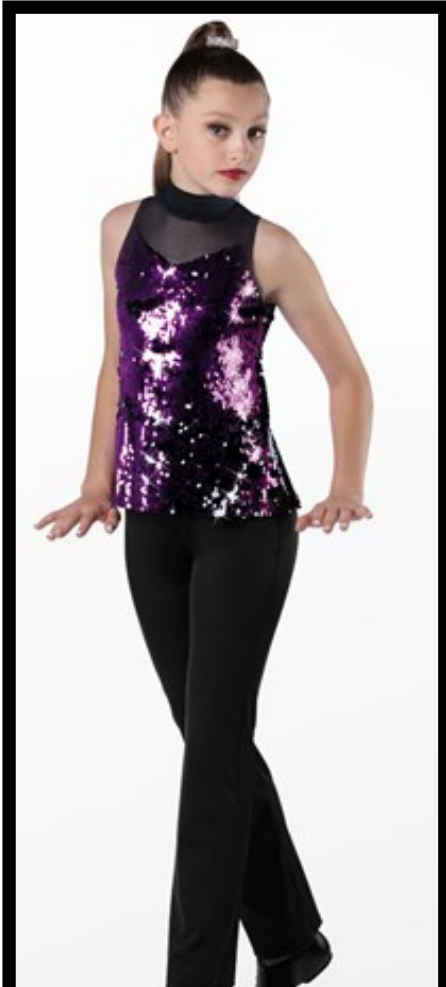
SHOES: Half-Soles

TIGHTS: Tan Stirrups

HAIR: High Ponytail (as pictured) hair elastic
same color as dancer's hair

TUESDAY PETITE TAP

“NA NA NA” - MISS HEATHER



COSTUME PIECES: Purple/Black
Jumpsuit

ACCESSORIES: Large Rhinestone Barrette

SHOES: Black Taps

TIGHTS: None

HAIR: Half Up (part should be at top of ears),
Put Barrette through ponytail

COSTUMES NOTES: Pants need to be
cut or sewn so end hits at heel seam of tap
shoe (as pointing to with index finger in picture)



TUESDAY PETITE/MINI HIP-HOP “HOUSE PARTY” - MISS ISABELLA



COSTUME PIECES: Lime Bra Top,
Windbreaker Jacket, Leggings

ACCESSORIES: Colored Rhinestone Bun
Wrap

SHOES: Black sneakers (any brand but
please okay with Miss Isabella)

TIGHTS: None

HAIR: High Ponytail - Secure rhinestone wrap
around pony with extra bobby pins

COSTUMES NOTES: Jacket zipped to
bottom of bra top (as pictured)

TUESDAY PETITE/JUNIOR LYRICAL “HOMESICK” - MISS HEATHER



COSTUME PIECES: Navy/Gold Dress

ACCESSORIES: None

SHOES: Half-soles

TIGHTS: Tan Stirrup

HAIR: Half Up (Part should be at top of ears)

COSTUMES NOTES: None

FRIDAY OPEN MUSICAL THEATER

“THNEEDVILLE” - MISS RACHEL



COSTUME PIECES: Metallic Leotard (Different Colors), White Jazz Skirt

SHOES: Half-soles

TIGHTS: Tan Convertible



HAIR: All different hair - see Miss Rachel